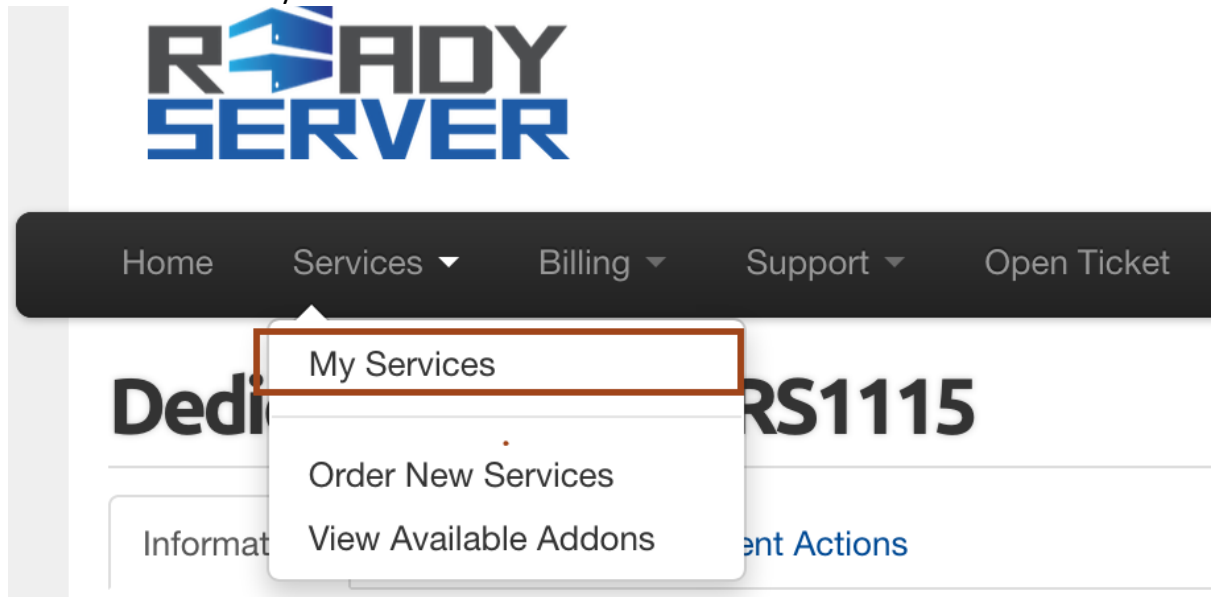


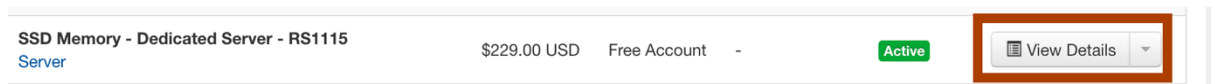
REMOTE MANAGEMENT RDP ACCESS FOR IPMI TUTORIAL

Windows Platform:

- 1) Login to Client Area
- 2) Click on Services > My Services



- 3) Click on Details of the server



4) Click on Request RDP Management via Email

Server IPv4 Address: 45.125.192.146 - 45.125.192.150
Server IPv4 Netmask: 255.255.255.248
Server IPv4 Gateway: 45.125.192.145

Current Power Status: **ON**

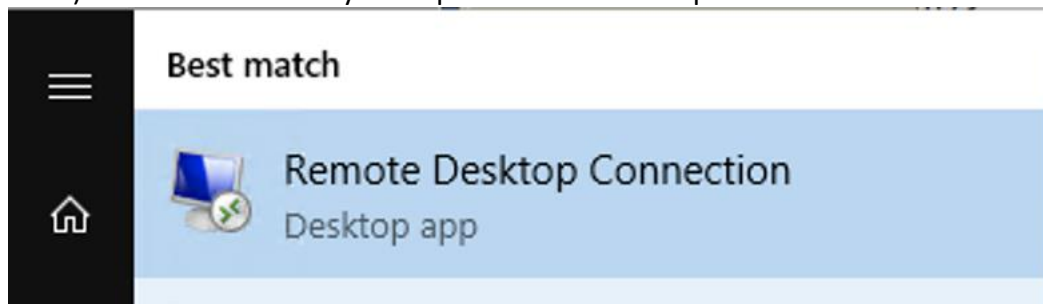
** Please allow up to 1 minute for our backend server to process your request.

RDP Server status: **OFF**

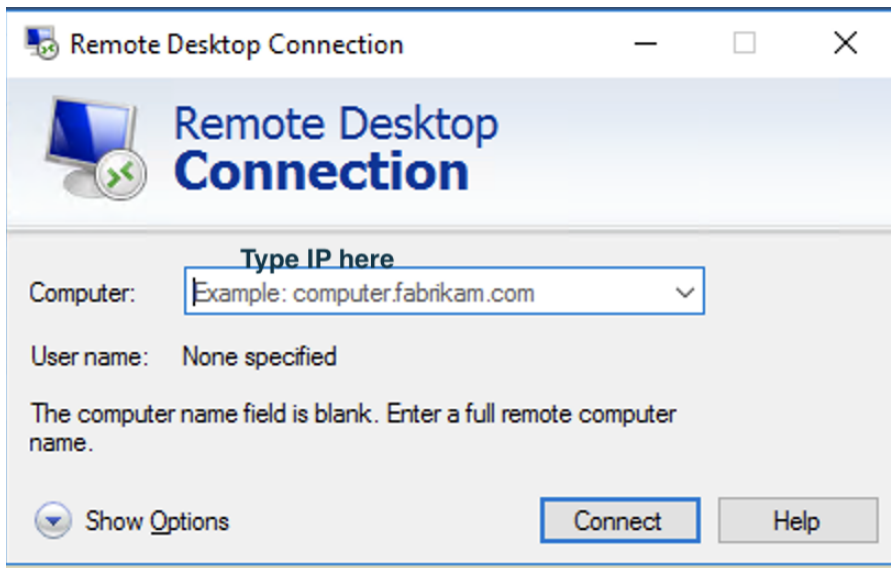
** IPMI/ipKVM is only accessible via VPN Connection.
** Click "Cold Reset IPMI", If you encounter "Connection Failed!" in IP/KVM.

5) Check email for the RDP IP and login information.

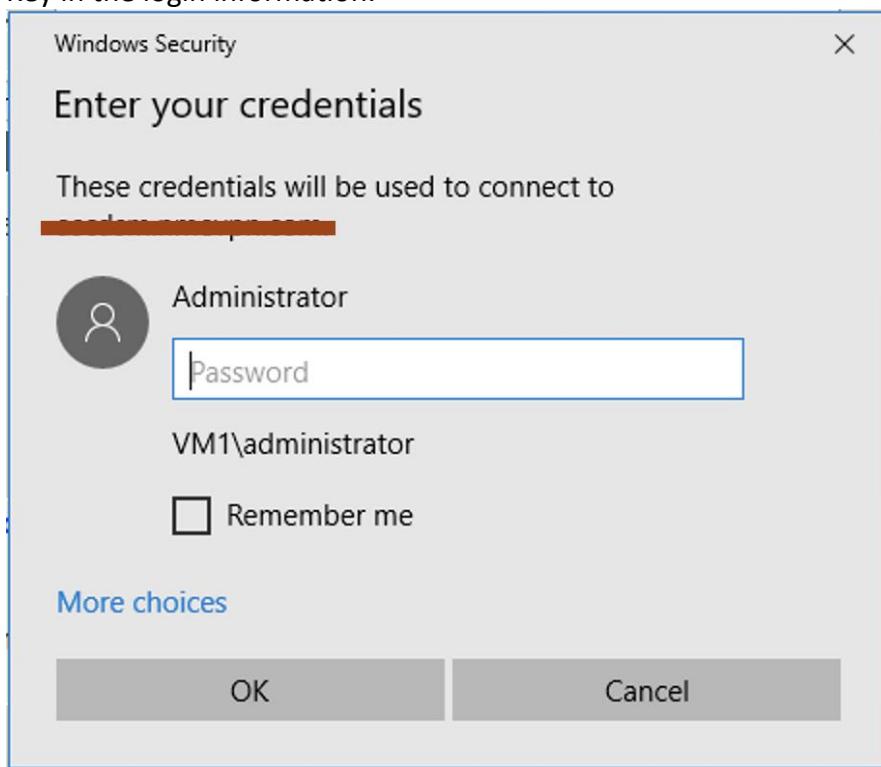
6) Press Windows Key and open Remote Desktop Connection



7) Key in the IP:port and press connect.



8) Key in the login information.



9) You are now connected to RDP session, and you may access your IPMI.